

**CBFB Antibody**  
**Purified Rabbit Polyclonal Antibody (Pab)**  
**Catalog # AP53289****Specification**

---

**CBFB Antibody - Product Information**

Application	WB
Primary Accession	<a href="#">Q13951</a>
Reactivity	Human
Host	Rabbit
Clonality	Polyclonal
Calculated MW	22 KDa
Antigen Region	1-50

**CBFB Antibody - Additional Information****Gene ID** 865**Other Names**

Core-binding factor subunit beta, CBF-beta, Polyomavirus enhancer-binding protein 2 beta subunit, PEA2-beta, PEBP2-beta, SL3-3 enhancer factor 1 subunit beta, SL3/AKV core-binding factor beta subunit, CBFB

**Dilution**

WB~~ 1:1000

**Format**

Rabbit IgG in phosphate buffered saline , pH 7.4, 150mM NaCl, 0.09% (W/V) sodium azide and 50% glycerol

**Storage**

Store at -20 °C.Stable for 12 months from date of receipt

**CBFB Antibody - Protein Information****Name** CBFB**Function**

Forms the heterodimeric complex core-binding factor (CBF) with RUNX family proteins (RUNX1, RUNX2, and RUNX3). RUNX members modulate the transcription of their target genes through recognizing the core consensus binding sequence 5'-TGTGGT-3', or very rarely, 5'- TGCGGT-3', within their regulatory regions via their runt domain, while CBFB is a non-DNA-binding regulatory subunit that allosterically enhances the sequence-specific DNA-binding capacity of RUNX. The heterodimers bind to the core site of a number of enhancers and promoters, including murine leukemia virus, polyomavirus enhancer, T- cell receptor enhancers, LCK, IL3 and GM-CSF promoters. CBF complexes repress ZBTB7B transcription factor during cytotoxic (CD8+) T cell development. They bind to RUNX-binding sequence within the ZBTB7B locus acting as transcriptional silencer and allowing for cytotoxic T cell differentiation.

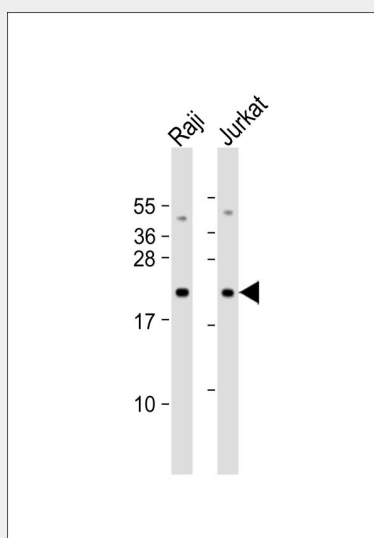
**Cellular Location**

Nucleus {ECO:0000250|UniProtKB:Q08024}.

**CBFB Antibody - Protocols**

Provided below are standard protocols that you may find useful for product applications.

- [Western Blot](#)
- [Blocking Peptides](#)
- [Dot Blot](#)
- [Immunohistochemistry](#)
- [Immunofluorescence](#)
- [Immunoprecipitation](#)
- [Flow Cytometry](#)
- [Cell Culture](#)

**CBFB Antibody - Images**

All lanes : Anti-CBFB Antibody at 1:1000 dilution Lane 1: Raji whole cell lysate Lane 2: Jurkat whole cell lysate Lysates/proteins at 20 µg per lane. Secondary Goat Anti-Rabbit IgG, (H+L), Peroxidase conjugated at 1/10000 dilution. Predicted band size : 22 kDa Blocking/Dilution buffer: 5% NFDM/TBST.

**CBFB Antibody - Background**

CBF binds to the core site, 5'-PYGPYGGT-3', of a number of enhancers and promoters, including murine leukemia virus, polyomavirus enhancer, T-cell receptor enhancers, LCK, IL3 and GM-CSF promoters. CBFB enhances DNA binding by RUNX1.

**CBFB Antibody - References**

Liu P.P., et al. Submitted (AUG-2000) to the EMBL/GenBank/DDBJ databases.  
Kalnine N., et al. Submitted (MAY-2003) to the EMBL/GenBank/DDBJ databases.  
Ota T., et al. Nat. Genet. 36:40-45(2004).  
Mural R.J., et al. Submitted (JUL-2005) to the EMBL/GenBank/DDBJ databases.  
Hajra A., et al. Genomics 26:571-579(1995).